



# Schools as Innovation Hubs for the Green Transition

## Transforming schools into NBS Living Labs



**Funded by  
the European Union**

NBS EduWORLD is funded by the European Union (Grant Agreement No. 101060525). Views and opinions expressed are however those of the author(s) only and do not necessarily reflect those of the European Union or the European Commission. Neither the European Union nor the granting authority can be held responsible for them.

## The school as a(n)...

...for study, implementation and dissemination of NBS to enhance sustainability and **address the challenges** of the 21st century.



**Innovation  
Hub**



**Place**



...to apply learning methods that promote the development of **green competences** and shape citizens of tomorrow.

...for knowledge exchange that develops partnerships, co-designs and **co-creates solutions with society.**



**Living  
Lab**



**Learning  
Building**



...for **experimentation** and problem solving.

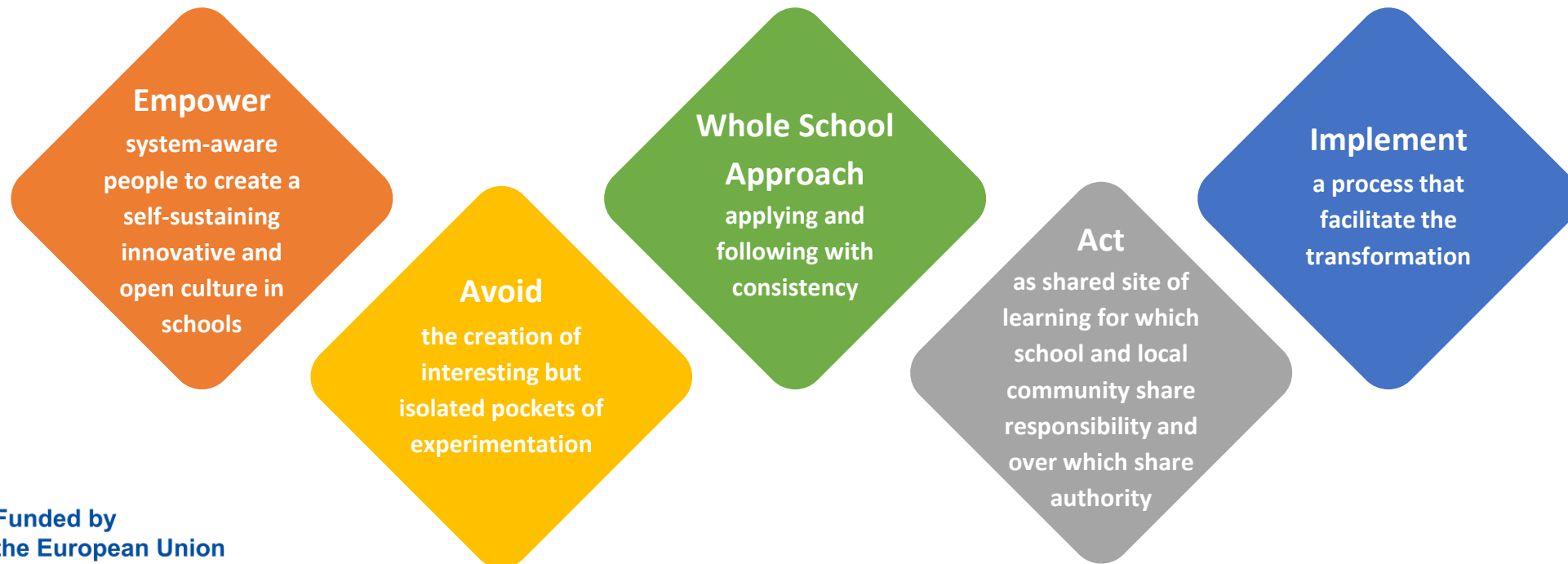


## What does it mean for a school to be innovation hub?

- To be an **open school**, which means involving local communities in the teaching and learning process.
- To be **incubator** of the exploration of creative ideas and of invention.

**Open Schooling**, as defined by the EU, is when educational institutions partner and engage with families and local communities to enhance teaching and learning.

## How is a school transforming to innovation hub?



# Following the Whole School Approach for integrating NBS



## Who do we learn with? School & Community Connections

Open schooling approach  
Living Lab methodology

## How do we learn? Pedagogy & Learning Methods

Formal, non-formal & informal  
Inquiry Based / Collaborative  
Project & Problem Based  
Experiential / Placed Based

## What do we teach? Curriculum

Education for each topic is being  
reflected throughout the  
curriculum considering the skills  
that being developed.

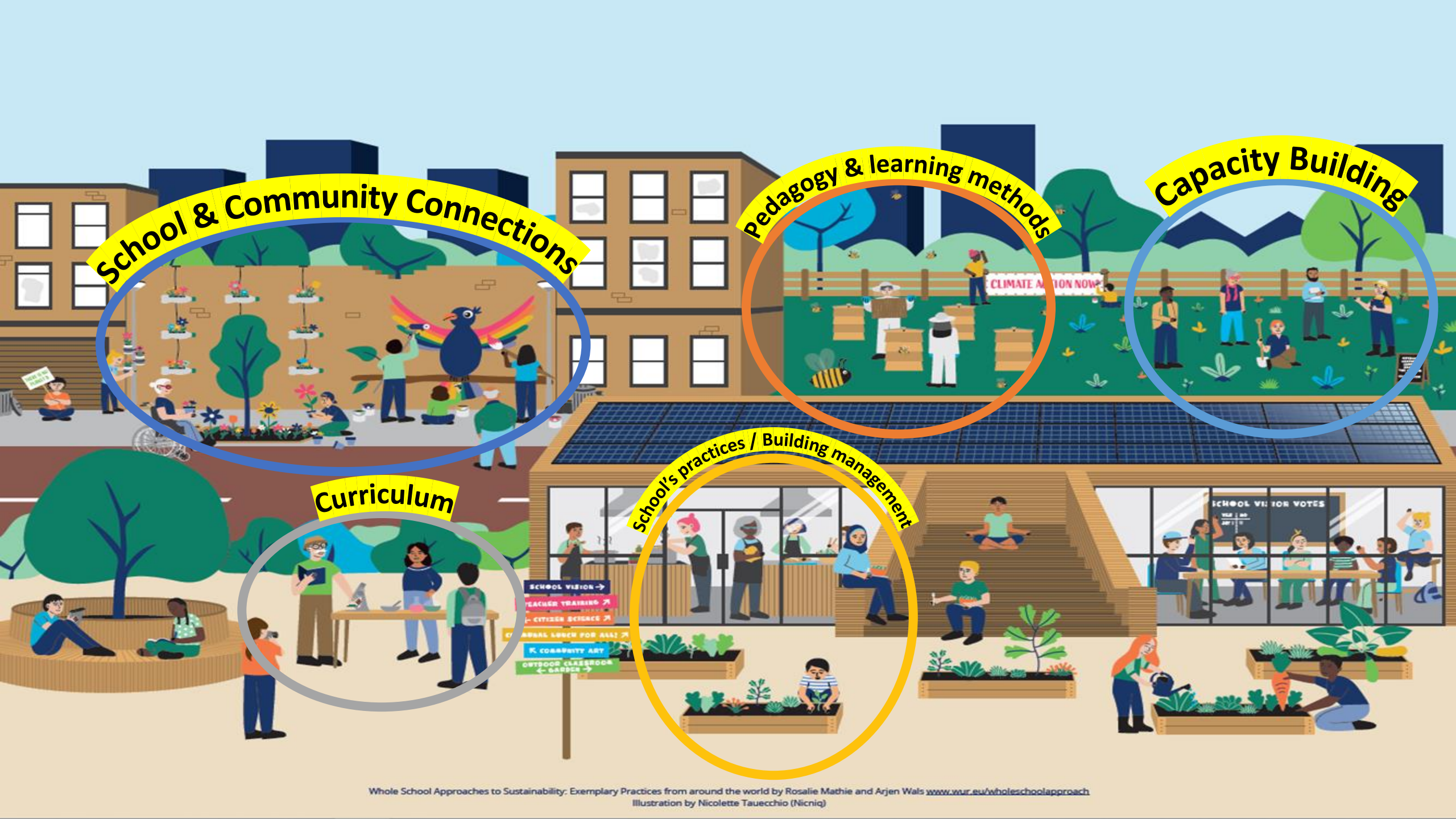
## Where do we learn?

Building management &  
operations / School's practices

The infrastructure as a field of learning  
School's intentions, ethos and behavior

## Who do we learn from? Capacity Building

Continued professional development  
of all staff  
(educational and administrative)



School & Community Connections

Pedagogy & learning methods

Capacity Building

Curriculum

School's practices / Building management

SCHOOL VISITOR →  
TEACHER TRAINING →  
CITIZEN SCIENCE →  
ANNUAL LUNCH FOR ALL!  
K. COMMUNITY ART  
OUTDOOR CLASSROOM ← GARDEN →

# The school as NBS Living Lab

The **NBS Living Labs** create the right conditions to integrate actions that promote skills development and sustainability education, to innovate and open the schools to society.



1

**Co-design:**  
Determination of  
problems/challenges  
Identification of needs  
Production of ideas

**Co-creation / Exploration:**  
Development of an integrated  
NBS framework  
Identification of barriers and  
opportunities



2

**Experimentation:**  
Testing the solution's scenario  
under real-life conditions



3

**Evaluation:**  
Validation and discussion  
Improvement or application  
of the solutions



4

## From the 'open schooling learning' process

- Students develop key **skills** and intercultural understanding and gain new perspectives on their own learning.
- Teachers introduce new ways of teaching, gain new knowledge, acquire new skills alongside their students and foster lifelong learning leading to their **professional development**.
- Everyone benefits through the increase in their **communities' science capital** and the development of **responsible citizenship**.

**Education** is coming at the **heart of society**, is becoming an integral to **local community** development since open schooling activities for NBS can stimulate **real scientific work**, are inspired from local needs and address to **NBS challenges**.

## From the 'NBS application' process

- People improve their **physical and mental health**, memory, attentiveness and learning ability, and reduce their stress.
- Increasing of **social well-being** and **social cohesion**.
- Substantial contribution to EU **Green Deal** integrating solutions for Climate change and environmental degradation.

**Education** is linked to the development of **skills** and **life-long learning**. The learning opportunities are available outside the formal education and the **boundaries** between formal, informal and non-formal are **indistinct**.





## From theory to practice: Key points

- Have the **vision** and invest in that creating the conditions and having consistency.
- The important role of the **leadership** for trust and inspire the people, guideline, coordinate.
- Creation of conditions for **greening the curriculum**.
- Adoption of an open culture of **extroversion** and collaboration with externals.
- Substantial **involvement** of the whole school community.
- Design and implement each pillar of your strategy through the lenses of the **skills developed**.
- Monitor the processes and reflect on the **long-term impact**.

